

WATFORD FOOTBALL CLUB

SEASON 1969-70



(Graphic Photo)

Saturday, 15th November, 1969

FOOTBALL LEAGUE DIVISION TWO

SWINDON TOWN

Kick-off 3.00 p.m.

OFFICIAL PROGRAMME

ONE SHILLING

BE LIKE WATFORD F.C. . . .

Get your Sports Equipment from the Specialists . . .

PETER SPIVEY LTD.

83A The Parade, Watford. Tel. 26550

and at

71 Marlowes, Hemel Hempstead. Tel. 56760

E. E. BEAUMONT & SON

(Established 1763)

Motor Body Repair Specialists

27 HIGH STREET, PINNER, MIDDLESEX

Telephone: 01-866 0730

REPAIRS LUBRICATION PETROL ACCESSORIES

*For quick, economical repairs and personal service
call and see Eric at*

VICARAGE ROAD SERVICE STATION

Adjacent to the Ground

WATFORD 31968

BRIDGEWATER FOR GLASS

ALL TYPES OF GLASS CUT WHILE YOU WAIT

Safety Glass : Table Tops : Curved Screens

Leaded Lights : Mirrors : Mirrors Re-Silvered

46 VICARAGE ROAD, WATFORD Tel. 36162, 20339 and 43096

Tel. WATFORD 25107

**CROXLEY BUILDING
SUPPLIES LTD.**

Builders Merchants

Bricks, Cement, Lime, Plasters, Dampcourse,
Tiles, etc. — Concrete Spurs, Coal Bunkers,
Paving Slabs — Roofing Felt, Snowcem, etc.

SUPPLIED IN ANY QUANTITY

Showrooms adjoining Met. Station
(Kitchen Units, Sanitary Ware, Paints, etc.)

RICKMANSWORTH 75887

MET. & L.N.E. STATION, CROXLEY GREEN, HERTS

The Second Division Scene

RELIEF AS CHARLTON AND BOLTON SLIDE

By Tony Pullein

For the eighth time this season we were beaten by a one-goal margin last Saturday. It was a pity we couldn't have held on to a point against Millwall, one of our closest relegation rivals, but it was our misfortune to catch them at a time when they are enjoying a minor boom—Saturday's was their fourth successive game without defeat.

With the Lions on the upgrade, perhaps we should focus our attention on other clubs as we battle to rise out of the bottom pair. Who are the sides we are most likely to overhaul?

On current form, Charlton and Bolton are definitely on a crash course to disaster. Charlton's 0-2 defeat at Middlesbrough was their 13th game without a win—a sequence which has taken them from a comfortable eighth position in the table down to 18th. Whatever the motives for allowing them transfers, Charlton are sorely missing the striking power of Matt Tees (now with Luton) and Ray Crawford (Kettering) who were both released during the season. Charlton have scored only once in the last five matches. In spite of our four successive defeats, our current form looks somewhat healthier than Charlton's and it should not be too much to hope that we can shortly rise above them in the table.

Spirits rose at Bolton a fortnight ago when they defeated Bristol City 3-1 but they lost again last Saturday—not unexpectedly—at Blackburn (1-3) and can look back on only the one victory in nine games. Like us, they have been losing many matches by the odd goal.

Apart from Charlton and Bolton, most of the other lowly clubs seem to be recovering. Portsmouth have scored three goals in each of their last three matches, hitting Cardiff 3-0 last Saturday, Preston have lost only twice in eight games while Hull City got back to winning ways when they beat Preston 3-1 last week.

That leaves Villa. On recent form—they've won only twice all season and are still without an away League win—there would seem little hope for them. Yet, somehow, one always feels they have the talent—and even further cash resources if necessary—to pull themselves clear as they did last season. But they must start winning soon.

The battle at the top of the table is really hotting up. Queen's Park Rangers ended a run of five winless games by beating Sheffield United 2-1—that was the Blades' fifth successive away defeat—and went level second. Huddersfield won well at Norwich but the side to watch at the moment is not yet being labelled a promotion contender—Blackpool.

The Tangerines' costly new signings seem to have settled in well—former England centre-forward Fred Pickering has scored seven times so far—and last week's 1-1 draw with Leicester was Blackpool's eighth game without defeat, the best run by any Second Division side at the moment.

Leading Second Division scorers after last Saturday's matches were:

	League	Lge Cup	Eur comps.	Total
Toshack (Cardiff)	13	—	2	15
Woodward (Sheff. Untd.)	11	3	—	14
Byrom (Bolton)	8	5	—	13
Bridges (Q.P.R.)	11	2	—	13

Watford currently lie seventh in the attendance chart. Top positions (League games only) are:

	Aggregate	Average
1. Aston Villa	278,107	30,901
2. Birmingham City	249,191	27,688
3. Leicester City	267,307	26,731
4. Cardiff City	217,474	24,164
5. Queen's Park Rangers	179,265	19,918
6. Swindon Town	178,616	19,846
7. Watford	163,934	18,215

WATFORD ASSOCIATION FOOTBALL CLUB LIMITED

Founded 1891

Registered Offices: VICARAGE ROAD GROUND, WATFORD, WD1 8ER. Telephone Watford 21759

Directors:

J. BONSER (Chairman) J. HARROWELL (Vice-Chairman)

D. N. BROAD S. A. LEPARD A. A. WHITE

Medical Advisers: Drs. EDWARDS and BLACK Hon. Treasurer: C. G. LAYLEY

President: THE WORSHIPFUL THE MAYOR
(Alderman J. S. Oliver)

Vice-Presidents:

E. C. AMEY, D. ATKINS, T. D. BATCHELOR, E. E. BEAUMONT, F. T. H. BOSHER, C. R. BRINDEN,
M. F. BROAD, G. CARSONS, T. CUFF, J. CULL, R. J. H. CRAMPTON, C. DENNY, E. EDMONDS,
F. GEARY, F. G. GIBBS, L. GOODALL, H. HUTCHINSON, F. JONES, G. M. KEATES, E. ERIC HUGHES,
A. S. JOLIFFE, R. S. F. KIRK, D. F. LINDSAY, J. G. MASTERTON, J. T. MASTERTON, J. D. MORGAN,
H. MUIR STRATFORD, R. J. OLD, W. J. OLD, D. SUMMERS, P. G. WELFAIR, F. WITHEY

Manager: K. FURPHY

Secretary: R. E. ROLLITT

Trainer: G. AITKEN

Physiotherapist: P. MOLLOY

SERIAL No. 11

The Hornet Express

THIS afternoon we welcome the players and officials of Swindon Town for this Second Division fixture. During 1968/69 the fortunes of both clubs ran on parallel lines and as is well known by now, both clubs gained promotion, with ourselves taking the top place on goal average. The game which was played at the County Ground towards the end of last season will long be remembered by those who were fortunate to see it. Despite the fact that only one goal was scored it was one of the most exciting games of the season, including a penalty save by Peter Downsborough. A goal-less draw appeared to be the most likely result, but a few minutes from the end Barry Endean slammed in the only goal of the match.

In the higher spheres Swindon have certainly had a more successful start. Up to last Saturday they had gained 22 points, were one of the two unbeaten teams at home, and occupied sixth position in the table. They are, of course, well remembered too for their excellent victory over Arsenal, by 3 goals to 1, at Wembley in the Football League Cup final.

Seats are still available for members of the Supporters Club on the Hornet Express to Hull next Saturday. The return fare is 35s. All inquiries should be made to Mr. Walsham in the Social Club headquarters. Stand tickets are available for this match and are priced 12s., 8s. 6d. for the West Stand, and 8s. 6d. for the North and South Stands which are behind the goals. Application for these seats should be made to the Secretary, Hull City FC, Boothferry Park, Hull.

The next match at Vicarage Road is on Wednesday, November 19, at 7.30 p.m., when we entertain Southend United in the London Mid-Week League.

During the past two or three weeks we have received many inquiries at the club concerning tickets for the Football League Cup final. We understand that the Football League will be operating a different system for the issue of these tickets and we would therefore point out that no applications can be received at the present time. Full information on the availability of tickets will be given during the second half of December.

Once again our Pools Office are organising a Christmas draw and tickets are now available at 6d. each. The first prize is £100; second prize £50; third prize a ladies' or gent's gold watch; fourth prize a mains radio; fifth prize £10, and there are 170 other prizes including lighters, transistors, electric blankets, and, of course, Christmas fare. If you do not know one of our

agents, then call at the Pools Office, or better still why not become an agent and sell to your friends as well. The draw will take place in the Social Club at 7 p.m. on Tuesday, December 16.

When promotion looked a possibility way back in February of this year, it was then that plans were drawn up for additional seating, in view of the very limited number of seats that we had at that time. We note from one correspondent in a local newspaper that he appears to think that it was a question of a stand, or players, but we can assure him that this is not the case, for as these notes are being written Ken Furphy is in the course of negotiations with Ray Lugg of Middlesbrough, and if those negotiations are successfully completed then it is possible that he would be in action today. We have always held the view that better facilities for the supporters should go hand in hand with team improvement, and this will continue to be done. It does seem strange that the gentleman in question should criticise the extra seats when he himself has in the past been unable to obtain a ticket for the big games.

In the F.A. Youth Cup, second round, the Juniors have been drawn at home to Arsenal and this match will take place at Vicarage Road on Tuesday, November 25, at 7.30 p.m. In the second round of the Southern Junior Floodlit Cup we have again been drawn at home, this time to West Ham United, and this match will take place on Tuesday, December 16, at 7.30 p.m.

During the past week we have received a letter from a doctor (he obviously must remain anonymous), who, having followed the interests of the club since he was a boy of eight, says he can understand the anxieties of the present time. He goes on to say that help is worth more than sympathy and enclosed a cheque representing £1 for each point the club has got so far. This he will continue to do until the end of the present season, with a promise that it will be doubled if we are still in the Second Division next season.

see today's
EVENING

echo

for full details of
'Cross the Ball'



Big Cash prizes in a local competition
IT'S A WINNER!

WHY KEN FURPHY WILL BE TEMPTED TO SAY "I TOLD YOU SO" AT HULL NEXT WEEK

By Tony Pullein

When our manager Ken Furphy walks into Hull general manager Cliff Britton's office to shake hands before next Saturday's Second Division match at Boothferry Park, he will be sorely tempted to tell the former England wing-half: "You were wrong . . . I told you I'd make the grade!"

Mr. Furphy, a junior professional with Everton when Mr. Britton was manager, was summoned to the boss's office to be told: "I'm very sorry, son, but I'm afraid you'll never make the grade as a professional." After that, Mr. Furphy went into non-League football but came back with Darlington before going into management with Workington, then us. Today he is acknowledged as one of the finest young managers in the game. But we'll spare Cliff Britton his blushes.

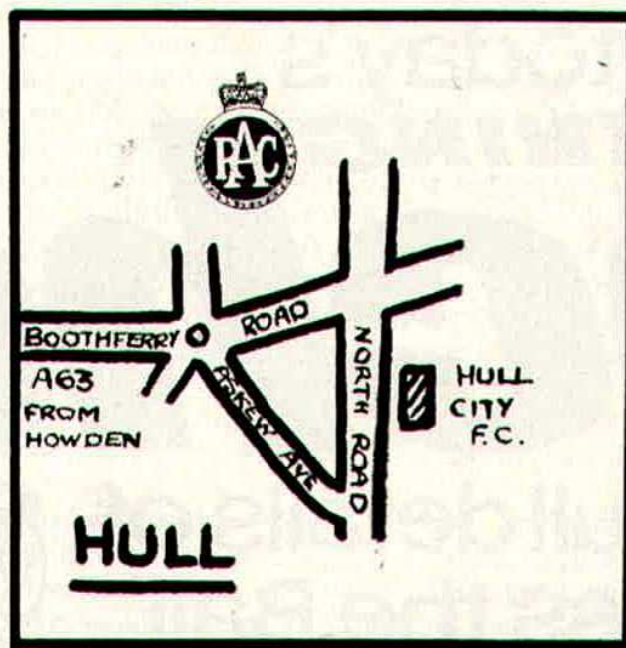
His was far from an isolated case of a top manager erring in judgment. None less than Sir Matt Busby told Hugh Curran he didn't have what it takes to become a pro. Curran went away to Ireland, was rejected by Third Lanark in Scotland and ended up in Southern League soccer with Corby Town. Then Millwall brought him back, he served Norwich, last season went into the First Division with Wolves and a couple of weeks ago he won his first Scottish international cap!

Billy Bremner, one of Europe's best mid-field men, went for a trial with Chelsea and Arsenal only to be shown the door at both clubs. John O'Rourke, England under-23 striker now with Ipswich, was also turned down by the same famous London clubs.

Sir Alf Ramsey tells the story of the time he signed for Portsmouth as an amateur but they never bothered to watch him play and, when he asked for his release to join Southampton, they couldn't have cared less!

The moral to all aspiring young stars seems to be . . . if you're confident in your own ability, go for a second, or even third opinion, before accepting defeat. Even though the initial shock advice may be imparted by such eminent a soccer sage as Sir Matt himself.

AWAY TRAVEL FROM WATFORD



Join M1 as signed "Birmingham M1." Toddington Service Area 22 miles. Newport Pagnell Service Area 37 miles. Watford Gap Service Area 61 miles. Leicester Forest Service Area 84 miles. Trowell Service Area 110 miles. Woodhall Service Area 137 miles. At 5 miles on, join M18. Intersection A631 140 miles. Follow signs "Gainsborough A631." Maltby 143 miles. Tickhill 147 miles. Bawtry 151 miles. Join A614. Finningley 155 miles. Thorne 164 miles. Goole 174 miles. Howden 177 miles. Join A63 and follow to:—HULL 202 miles. (Enter by Boothferry Road). (See Plan).

F. W. WITHEY

LIMITED

1a Strangeways, Watford

BUILDERS AND DECORATORS

Yard and Works — Copsewood Road
Watford

•
ALTERATIONS A SPECIALITY
•

Estimates Free

Tel. 25781

For quick, efficient Service
on your way to and from the
match today

DAVIES

**91-93 Vicarage Road
Watford**

Telephone WATFORD 31271

Newsagent — Tobacconist —
Confectioners — Stationers
Ice Cream — Toys

NEWSAGENT TO THE CLUB

BOSCH

for electrical accessories in all cars

Fog and Driving Lamps • Ignition • Coils • Alternators • Horns
Dynamos • Batteries and other electrical accessories • Diesel
Fuel and Petrol Injection Equipment • Test Equipment • Aerials
Blue Spot Radios • Eiseman Lamps and Generators

BOSCH LIMITED • WATFORD WD2 4LB • HERTS • WATFORD 44233

Arthur Grimsdell

TOBACCONIST
STATIONER
CONFECTIONER
NEWSAGENT
TOYS

Tel. Watford 21636

54 Vicarage Road, Watford

TELEPHONE WATFORD 22648

E. N. MOLE & CO. LTD.

Plumbers and Heating Engineers
Decorators and Paperhangers

3 TOLPITS LANE, WATFORD

Repairs of all kinds — Estimates free

THIRTEENS CYCLE DEPOT LTD.

73 CHALK HILL, OXHEY, WATFORD, HERTS

Telephone Watford 34221

THE BICYCLE PEOPLE WITH ALL THE CURRENT MAKES OF BIKES

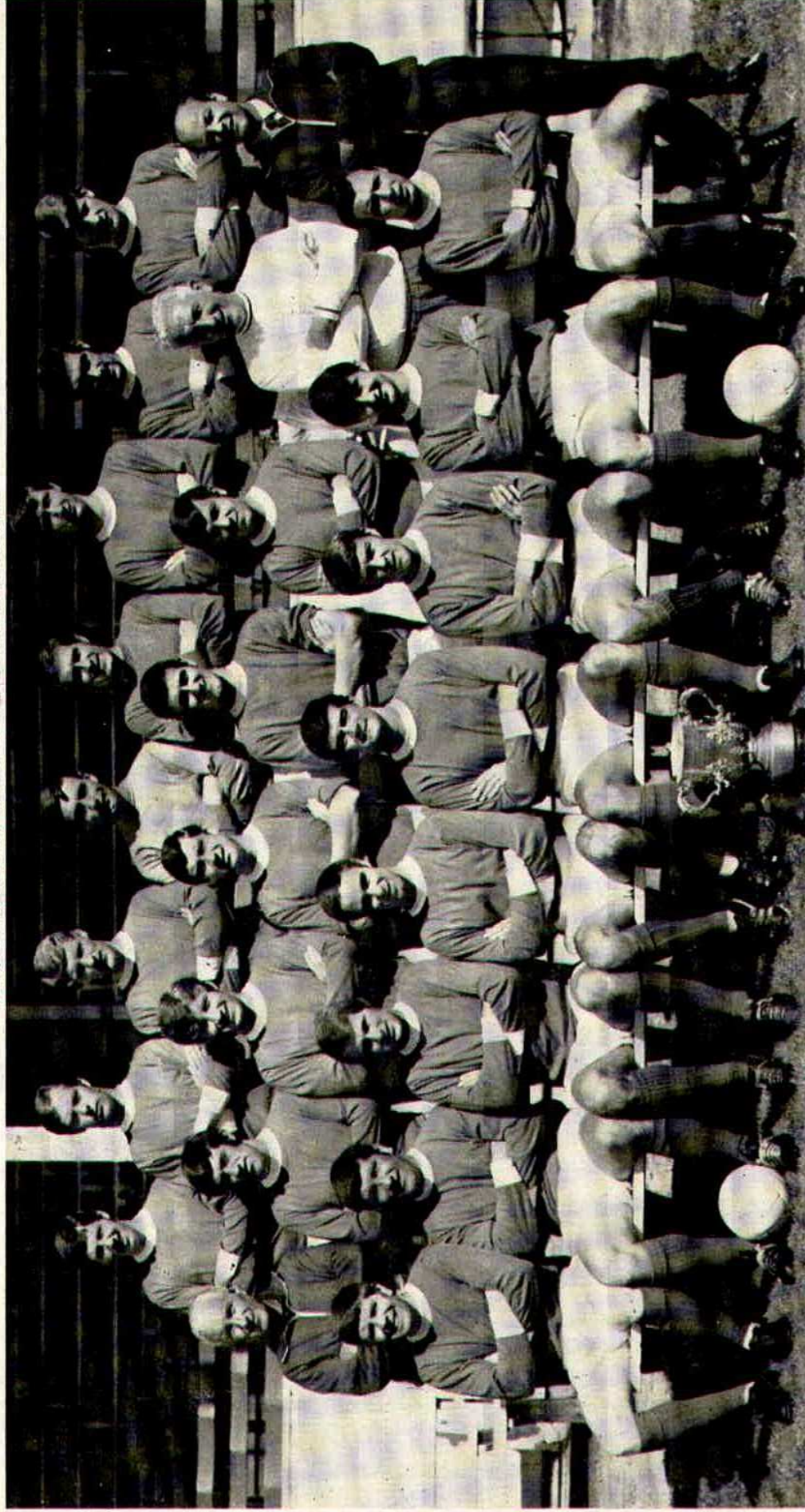
RALEIGH GROUP : HOLDSWORTH AND CLAUD BUTLER : DAWES : GILLOTT : VIKING
FALCON GNATS : AND FOR JUNIOR—DAWES GNAT AND PAVEMASTER RANGE

All Accessories : Tubs (all weights)

OFFICIAL C.T.C. REPAIRERS : Active member National Association of Cycle Traders

SWINDON TOWN 1969-70

Photograph by Courtesy of MAYLOTT STUDIOS LTD. Swindon.



Back, left to right: David Dangerfield, Owen Dawson, John Trollope, Peter Downsbrough, Ray Jones, Rod Thomas, Mick Brick, John Bailey. Centre: Harry Cousins (Youth Manager), Roger Handrack, Rod Deseules, Roger Smart, Frank Burrows, Don Rogers, Fred Ford (Team Manager), Maurice Owen (Trainer). Front: Joe Butler, John Smith, Don Heath, Peter Noble, Stan Harlan d (Captain), Chris Jones, Arthur Horsfield, Willie Penman.

Welcome to our Visitors

SWINDON TOWN

Peter Downsbrough (goalkeeper). Born Halifax. Signed in August 1965 from Halifax Town where he was a product of local football. A fearless agile player who has done much to strengthen the Town's defence. Height 5ft. 10½in., weight 13st. 2lb.

Rod Thomas (full back). Born Glyncorrwg. A former youth player with the club. He was signed from Gloucester City in July 1964. Has gained Welsh Under-23 caps and full Welsh caps. Height 6ft., weight 12st. 10lb.

John Trollope (left back). Born Swindon. A local player who joined the Swindon ground staff from school. He was selected for the first team at the beginning of the 1960/61 season when he was just 16 years old, and was ever present during that season. Together with his partner that year, who was also 16, they were the youngest full backs ever to appear as a pair in League football. Height 5ft. 10in., weight 11st. 13lb.

Joe Butler (full back). Born Newcastle. Joined Swindon from Newcastle United in August 1965 where he graduated to the senior ranks through the club's junior team. A tenacious player whose speed and ability amply make up for his lack of inches. Height 5ft. 7½in., weight 11st.

Frank Burrows (centre-half). Born Larkhall, Scotland. Joined the club from Scunthorpe United for whom he played three seasons. Formerly with Raith Rovers. A strong defender who has made his mark in the first team. Height 6ft. 1in., weight 12st. 8lb.

Stan Harland (left-half and captain). Born Liverpool. Was signed from Carlisle United in July 1966. Formerly with Everton and Bradford City. He has been a regular choice at left-half since making his debut at the beginning of the 1966/67 season. A forceful player who likes to go forward to back up the forwards in attack. Height 6ft., weight 12st. 5lb.

John Smith (inside forward). Born London. Signed from Torquay United in June 1968 and previously played for Leyton Orient, West Ham United, Tottenham Hotspur and Coventry. Former England Under-23 international. Height 5ft. 8in., weight 13st.

Roger Smart (right-half or inside forward). Born Swindon. Another local player who joined the club direct from Swindon Schoolboys team. At 17 he was appearing regularly at centre-forward in the reserve team, but he excels as a deep-lying inside forward. A versatile player who is able to play at play-half. Height 5ft. 11½in., weight 12st. 11lb.

Arthur Horsfield (inside forward). Born Newcastle. A close season signing from Newcastle United. Previously played for Middlesbrough whom he joined as a Youth International. Height 5ft. 11in., weight 12st. 1lb.

Peter Noble (inside forward). Born Sunderland. Joined the club from Newcastle in January 1968, for whom he played for four years. Prefers to play an attacking role. Height 5ft. 8in., weight 10st. 10lb.

Don Rogers (outside-right or outside-left). Born Paulton. Probably the most sought after player in the team. He was signed by Swindon when only 15 and quickly came to the fore. Gained many England Youth International caps and subsequently played in the England Under-23 international team. Was the club's top goal scorer last season. Height 5ft. 10½in., weight 12st. 10lb.

Don Heath (outside-right). Born Stockton. Signed from Norwich in September 1967. Formerly with Middlesbrough where he served as an apprentice professional. A hard-working winger who is also able to play in the inside forward position. Height 5ft. 8in., weight 11st. 8lb.

Chris Jones (centre-forward). Born Altrincham. A hard-working centre-forward signed from Manchester City. Height 5ft. 11in., weight 11st. 12lb.

HODSONS

Furnishing Fabrics

KING STREET, WATFORD



You score every time
when you get your building supplies from

PRATT (WATFORD) LTD

Head Office:—

Star House • 69/71 Clarendon Road • Watford

Tel: 26411 Telex 935571

GARSTON 74727

JAMES COMPTON

ELECTRICAL ENGINEER AND CONTRACTOR

149 MOUNT PLEASANT LANE

BRICKET WOOD

Cape Universal
A new force in the
Building Industry

Cape Universal Building Products Limited
Exchange Road, Watford, Herts. Tel: 34551

A member of the Cape Asbestos Group of Companies

Telephone WATFORD 25625

WEBB'S SPARE PARTS (Watford) LIMITED

Specialists in old cars from 1932 on

Tyres, Batteries, Battery Chargers, Heaters, etc., on Terms

Call, write or 'phone for details.

General Engine and Chassis Spares

36 VICARAGE ROAD, WATFORD, HERTS

WATFORD CIVIC THEATRE TRUST LTD.

PALACE THEATRE

NOVEMBER 10th to NOVEMBER 15th, 1969

Cassio Operatic Society present

"CAMELOT"

by Lerner and Loewe

at 7.30 p.m. Matinee Saturday 2.30 p.m.

November 18th to November 29th, 1969

RELATIVELY SPEAKING

by Alan Ayckbourn

at 7.45 p.m. Matinee Saturday 4.45 p.m.

ACROSS

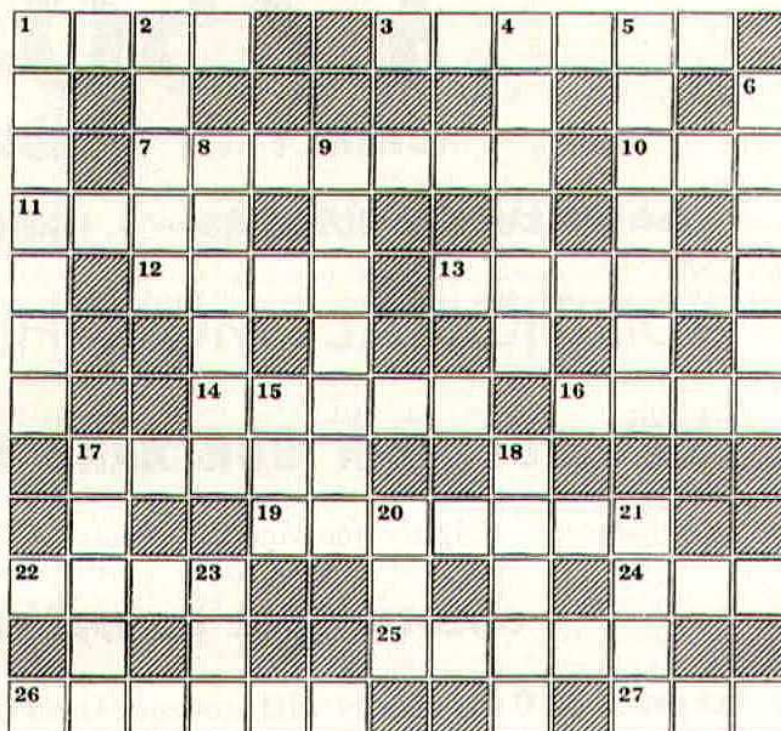
- 1 There may be one each end of the half-way line.
- 3 They play at Tynecastle.
- 7 Team managed by Robson.
- 10 — Hartford.
- 11 Place.
- 12 Watford player.
- 13 In a big crowd spectators might be liable to do this.
- 14 Ex-Fulham and England defender.
- 16 Leeds star.
- 17 Ground.
- 18 Colour of N. Ireland's shirts.
- 22 Error.
- 24 This on the pitch would make it dangerous.
- 25 England's captain.
- 26 To stumble.
- 27 All teams like to be here.

DOWN

- 1 They play at Deepdale.
- 3 Bobby — ex - England centre forward.
- 4 Ron — Scunthorpe Manager.
- 5 Watford's — is George Aitken.
- 6 Ex-Orient and Rotherham forward who joined Colchester recently.
- 8 Tottenham forward.
- 9 They play at The Race-course Ground.
- 15 Goalkeeper.
- 17 Scottish Second Division Club.
- 18 — Wilson, ex-England defender.
- 20 — Park, Reading's Ground.
- 21 Some footballers are on a strict one of these.
- 23 — Molloy.

HALF-TIME CROSSWORD

(Compiled by J. W. Shepherd)



(Solution below Division 2 Fixture List)

OUR COVER PICTURE

Too late or too early! That's often the fate of modern-day strikers. Barry Endean (10) flings himself at where he thinks the ball might go but the Birmingham goalkeeper, Herriot, has already safely gathered.

You are looking for the best "ON THE FIELD"

—so only look for the best "OFF THE FIELD"

Prompt and free delivery of TIMBER, etc.

W. H. LAVERS & SONS LTD.

TIMBER AND BUILDING MATERIAL MERCHANTS
MERTON ROAD, WATFORD

Telephone 25292

and at 304 St. Albans Road

Also Hemel Hempstead and St. Albans

WATFORD POOLS AND DEVELOPMENT ASSOCIATION

£750

WEEKLY IN PRIZES

DAILY LUCKY NUMBERS – 3 HIGHEST SCORES

ADDITIONAL MONTHLY GIFTS

WHY NOT JOIN OUR BAND OF AGENTS

Apply for Agency – Pools Office

GOLDEN GOAL COMPETITION:

1st prize £20 for ticket with correct time of 1st goal scored

Tickets available from the sellers, 1s. each.

All sportsmen score by shopping at

GADE HOUSE
14 HIGH ST. WATFORD

MENSWEAR TAILORING SPORTSWEAR

LCS

LONDON CO-OPERATIVE SOCIETY
WATFORD 22371

LYNWOOD JOINERY
WORKS LTD.

For JOINERY and
BUILDER'S PLANT

Office and Works:

L.M.S. Goods Yard, Croxley Green

Stockists of all standard doors

Tel. WATFORD 32152/41659

*Interesting work in all departments in
pleasant surroundings at*

WATFORD ELECTRIC
CO. LTD.

(Whippendell Road)

Call and see us, or telephone

WATFORD 28201

WATNEY CUP

Manchester City, the new five-a-side champions, have hit a winning streak in the First Division. They may be too late to catch front runners Everton—but they could qualify for a place in the first Watney Cup competition next summer by their goalscoring.

City, on 28 goals at the moment, are only bettered by the Big Three, Everton, Leeds and Liverpool.

Southampton may be involved in a relegation struggle, but they could be surprise contenders for the Cup. Ron Davies and Co. have 24 goals at present—and that's more than 10 of the teams above the Saints in the table.

Q.P.R. beat Sheffield United 2-1 in their top-of-the Second Division struggle, but United lead the goals race by 36 to Rangers' 35.

Rochdale, with 43 goals, are still the top-scoring outfit in the country, but the teams managed by the two Bill Dodgins, Bristol Rovers (managed by Bill Senior) and Fulham (managed by his son) are pressing for a Cup ticket.

In the Fourth Division, where goals are hardest to find, Peterborough, those famous Cup fighters of other days, whipped Aldershot 4-1 to put them level with free-scoring Wrexham on the 32 goals mark.

NUMBER OF GOALS SCORED UP TO AND INCLUDING NOVEMBER 8, 1969

DIV. I		DIV. II		DIV. III		DIV. IV	
TEAM	GOALS SCORED	TEAM	GOALS SCORED	TEAM	GOALS SCORED	TEAM	GOALS SCORED
Everton ..	40	Sheffield United	36	Rochdale ..	43	Wrexham ..	34
Leeds ..	36	Q.P.R. ..	35	Fulham ..	35	Peterborough ..	32
Liverpool ..	34	Huddersfield ..	29	Bristol Rovers	35	York ..	30
Stoke ..	29	Leicester ..	29	Luton ..	33	Chesterfield ..	30
Manchester Utd.	29	Cardiff ..	29	Torquay ..	31	Swansea ..	27
Derby ..	28	Hull ..	27	Bury ..	29	Scunthorpe ..	27
Manchester City	28	Swindon ..	27	Tranmere ..	28	Brentford ..	27

So many good things at



CLOSED MONDAYS

**OPEN ALL DAY
EVERY WEDNESDAY**

Open until 8 p.m. every Friday

CLEMENTS ● THE PARADE, WATFORD ● TEL. 44222

WATFORD FIXTURES 1969-1970

Football League Division II

© Copyright of the Football League

Aug., 1969	Opponents	Venue	Goalscorers	League Position	Attendance
Sat. 9	Bristol City ..	Away	L 0-1	..	19,346
Sat. 16	BOLTON WANDERERS	HOME	D 0-0	..	15,779
Wed. 20	Q.P.R. ..	HOME	L 0-1	..	27,968
Sat. 23	Charlton Athletic ..	Away	D 0-0	..	15,971
Mon. 25	Preston North End ..	Away	L 0-3	..	10,416
Sat. 30	SHEFFIELD UNITED	HOME	L 1-2	Eddy ..	16,221
Sept.					
Sat. 6	Oxford United ..	Away	L 1-2	Endean ..	12,620
Sat. 13	ASTON VILLA ..	HOME	W 3-0	Walley, Eddy, Own Goal ..	19,118
Wed. 17	HUDDERSFIELD T. ..	HOME	D 1-1	Endean ..	17,548
Sat. 20	Blackpool ..	Away	W 3-0	Franks Scullion 2 ..	14,859
Sat. 27	BLACKBURN ROVERS	HOME	L 0-2	18,478
Oct.					
Sat. 4	Leicester City ..	Away	L 1-3	Endean ..	25,422
Wed. 8	Bolton Wanderers ..	Away	W 3-2	Endean, Green, Lewis ..	7,443
Sat. 11	CARLISLE UNITED	HOME	L 1-2	Packer ..	16,125
Sat. 18	PORTSMOUTH ..	HOME	W 4-0	Green 2, Walley, Eddy ..	15,657
Sat. 25	Middlesbrough ..	Away	L 1-3	Eddy ..	15,344
Nov.					
Sat. 1	BIRMINGHAM CITY	HOME	L 2-3	Walley, Eddy ..	17,440
Sat. 8	Millwall ..	Away	L 0-1	12,777
Tues. 11	Queens Park Rangers ..	Away	L 1-2	Endean ..	19,719
Sat. 15	SWINDON TOWN (1)	HOME			
Sat. 22	Hull City ..	Away			
Sat. 29	NORWICH CITY ..	HOME			
Dec.					
Sat. 6	Cardiff City (2) ..	Away			
Sat. 13	Aston Villa ..	Away			
Sat. 20	OXFORD UNITED ..	HOME			
Fri. 26	CHARLTON ATHLETIC	HOME			
Sat. 27	Sheffield United ..	Away			
Jan., 1970					
Sat. 10	BLACKPOOL ..	HOME			
Sat. 17	Blackburn Rovers ..	Away			
Sat. 31	LEICESTER CITY ..	HOME			
Feb.					
Sat. 7	Carlisle United ..	Away			
Sat. 14	BRISTOL CITY ..	HOME			
Sat. 21	MILLWALL ..	HOME			
Sat. 28	Birmingham City ..	Away			
Mar.					
Fri. 6	HULL CITY ..	HOME			
Sat. 14	Norwich City ..	Away			
Sat. 21	CARDIFF CITY ..	HOME			
Fri. 27	MIDDLESBROUGH	HOME			
Sat. 28	Swindon Town ..	Away			
April					
Wed. 1	Portsmouth ..	Away			
Sat. 4	PRESTON NORTH END	HOME			
Tue. 14	Huddersfield Town ..	Away			

F.A. Cup

Jan. 1970					
Sat. 3	Round 3		
Sat. 24	Round 4		
Feb.					
Sat. 7	Round 5		
Sat. 21	Round 6		
Mar.					
Sat. 14	Semi-Final		
April					
Sat. 11	Final		

SOLUTION TO CROSSWORD

Across: 1, Post; 3, Hearts; 7, Ipswich; 10, Asa; 11, Site; 12, Hale; 13, Faints; 14, Cohen; 16, Gray; 17, Arena; 19, Emerald; 22, Slip; 24, Ice; 25, Moore; 26, Falter; 27, Top.

Down: 1, Preston; 2, Smith; 4, Ashman; 5, Trainer; 6, Massey; 8, Pearce; 9, Wrexham; 15, One; 17, Alloa; 18, Ramon; 20, Elm; 21, Diet; 23, Pat.

TODAY'S OFFICIALS

The referee appointed for today's match is Mr. Jack Taylor of Wolverhampton, who has now been a League official for approximately 15 years and therefore ranks as one of the most experienced referees on the League list. He graduated via the Birmingham League and was a player in local amateur football before taking up refereeing in 1949. Mr. Taylor has controlled matches in many countries, including South America, and was a member of the World Cup panel in 1966. He controlled the 1966 F.A. Cup final between Everton and Sheffield Wednesday, the 1962 F.A. Amateur Cup final between Crook and Hounslow, and also has had charge of two Irish Cup finals. A master butcher by profession, Mr. Taylor is a past president of the Football League Referees and Linesmen's Association.

Mr. Peter Hunter comes from Bexleyheath in Kent and is now in his 22nd season as an official. He has served the Southern League for five years, the last three seasons being on the Referees List. He has refereed the Kent Senior Shield final, and officiated in the Southern League Cup final. This is his second season on the Football League List, and in his spare time he is chairman of the Dartford branch of the Kent Referees Association, and Secretary of a local Charity Cup competition.

Mr. Martin lives at Bedford where he is employed as a maintenance fitter for Tobler Meltis Confectioners. He has been an official for nine seasons, the last two on the Football League Linesmen's List. His most important game to date was the F.A. National Sunday Cup final as a referee, and as a linesman in the quarter-final of the F.A. Cup between Mansfield and Leicester City. He also officiates on the Football Combination and the London Mid-Week League.

LIST OF BALL DONORS

16. 8.69	BOLTON WANDERERS	L. Goodall
20. 8.69	Q.P.R.	Mr. Davis
30. 8.69	SHEFFIELD UNITED	Mr. and Mrs. Hamilton of Jersey
3. 9.69	LIVERPOOL	T. McInerney and Sons. Ltd.
13. 9.69	ASTON VILLA	Mr. and Mrs. R. W. Sampson
17. 9.69	HUDDERSFIELD TOWN	L. Bowditch
27. 9.69	BLACKBURN ROVERS	H. J. & F. Jones of Hatch End
11.10.69	CARLISLE UNITED	Watford F.C. Supporters Club
18.10.69	PORTSMOUTH	Messrs. D. Jones and R. Cooper
1.11.69	BIRMINGHAM CITY	Mr. R. G. Phillips
15.11.69	SWINDON TOWN	Wally Biggerstaff of Bedmond
29.11.69	NORWICH CITY	
20.12.69	OXFORD UNITED	
26.12.69	CHARLTON ATHLETIC	
10. 1.70	BLACKPOOL	
31. 1.70	LEICESTER CITY	
14. 2.70	BRISTOL CITY	
21. 2.70	MILLWALL (2)	

Next Matches at Vicarage Road

Wednesday, November 19, 1969

SOUTHEND

LONDON MID-WEEK LEAGUE

Kick-off 7.30 p.m.

Saturday, November 29, 1969

NORWICH CITY

FOOTBALL LEAGUE DIVISION TWO

Kick-off 3 p.m.

JOHN F. COLMAN

BESPOKE TAILOR

Wedding orders a speciality

Has now moved to larger premises

80 High Street, Watford

First Floor—over Ryman's Stationers.
(opposite Cawdells Store)

Tel. Watford 25700

Specialists in
Made-to-Measure Clothes
High-grade Cloths—
Best and Latest Designs
And
Tailored Alterations and
Repairs
Dress-wear Hire
Valet Service

VALES PLANT REGISTER LIMITED YOUR LOCAL PLANT HIRER

require EXPERIENCED

FITTERS AND PLANT OPERATORS

Top Rates, Good Working Conditions

Apply: **Mr. T. Smith, Tolpits Lane, Watford, Herts**

Telephone: Rickmansworth 76688

LAST WEEK'S MATCHES

Sat., Nov. 8. Football League. Millwall (away). Lost 0-1.—Walker, Welbourne, Williams, Eddy, Garvey, Lees, Scullion, Garbett, Endean, Walley, Owen.

South-East Counties League. Ipswich (away). Lost 0-5. Cole, Wilby, Hobbis, Leathem, Walker, McGettigan, Harris, Brownsell, White, Batten, Jennings.

— HALF-TIME SCORE INDICATOR —

White number on black background.

A	Burnley v Coventry
B	Chelsea v Everton
C	Derby v Sunderland
D	Ipswich v Crystal Palace
E	Liverpool v West Ham
F	Manchester C. v Manchester U.
G	Newcastle v Nottingham F.
H	Sheffield Wednesday v Stoke
I	Southampton v Leeds
J	Tottenham v West Bromwich
K	Wolves v Arsenal
L	Aston Villa v Blackpool

Gold number on black background.

A	Bolton v Sheffield United
B	Bristol City v Q.P.R.
C	Carlisle v Blackburn
D	Huddersfield v Portsmouth
E	Leicester v Charlton
F	Middlesbrough v Hull City
G	Millwall v Norwich
H	Oxford United v Cardiff
I	Preston v Birmingham
J	Bournemouth v Luton Town
K	Brighton & Hove v Enfield
L	Exeter v Fulham

LEAGUE TABLES, 1969-1970

LEAGUE DIVISION II

(Up to and including 11th November, 1969)

	P	W	D	L	F	A	W	D	L	F	A	Pts
Huddersfield	19	6	2	1	15	3	5	3	2	17	15	27
Q.P.R.†	19	8	2	0	27	8	3	2	4	10	13	26
Blackburn	18	8	0	1	22	5	2	4	3	3	9	24
Leicester†	18	7	2	1	21	10	2	3	3	8	10	23
Sheffield Utd.	19	8	1	1	23	4	2	1	6	13	14	22
Swindon*	19	6	3	0	17	6	2	3	5	10	16	22
Blackpool	18	4	5	1	12	10	4	0	4	12	15	21
Carlisle	18	5	3	2	17	15	2	3	3	9	11	20
Middlesboro	19	7	1	1	17	5	1	3	6	4	17	20
Cardiff	18	5	3	1	20	7	2	2	5	9	13	19
Birmingham	18	5	3	1	17	8	2	2	5	5	13	19
Bristol City	18	7	2	1	19	3	0	2	6	3	15	18
Norwich	19	5	2	2	12	7	2	1	7	4	17	17
Oxford	18	3	4	2	9	8	2	2	5	7	10	16
Hull	19	6	2	1	17	8	1	0	9	10	26	16
Portsmouth	18	3	2	3	11	13	2	4	4	11	19	16
Preston	19	3	3	3	9	8	1	4	5	6	12	15
Charlton	19	3	5	2	10	10	0	4	5	4	23	15
Bolton	18	5	1	3	16	9	0	3	6	8	19	14
Millwall	18	3	3	2	10	9	0	5	5	10	21	14
WATFORD*	19	2	2	5	12	11	2	1	7	10	17	11
Aston Villa	18	2	4	3	10	10	0	3	6	4	16	11

* Promoted teams

† Relegated teams

LONDON MID-WEEK LEAGUE

(Up to and including 5th November, 1969)

	P	W	D	L	F	A	Pts
Aldershot	6	4	1	1	9	3	9
WATFORD	6	4	1	1	13	6	9
Millwall	6	4	0	2	13	9	8
Brighton & Hove Albion	7	3	1	3	11	9	7
Southend United	7	1	3	3	11	11	5
Charlton Athletic	7	1	3	3	15	18	5
Colchester United	7	1	3	3	10	17	5
Orient	6	1	2	3	4	13	4

S.E. COUNTIES LEAGUE

(Senior Section)

(Up to and including 8th November, 1969)

	P	W	D	L	F	A	Pts
Ipswich Town	10	8	2	0	33	6	18
Millwall	12	8	2	2	36	11	18
Tottenham	11	8	2	1	33	11	18
Charlton Athletic	12	5	5	2	28	17	15
Orient	12	6	3	3	31	21	15
West Ham United	11	6	2	3	31	19	14
Colchester United	11	6	2	3	27	20	14
WATFORD	13	4	4	5	20	31	12
Crystal Palace	12	4	3	5	17	17	11
Q.P.R.	12	3	4	5	18	20	10
Chelsea	13	3	3	7	23	27	9
Arsenal	13	3	3	7	18	26	9
Gillingham	12	2	4	6	17	28	8
Reading	12	3	1	8	12	47	7
Fulham	12	2	2	8	17	42	6
Luton Town	12	3	0	9	12	30	6

ROLL CALL, 1969-1970

(Up to and including 11th November, 1969)

LEAGUE DIVISION II

F.L. Appearances

Eddy	19
Endean	16
Franks	5
Garbett	11 (1)
Garvey	12
Green	7 (3)
Hale	11 (2)
Lees	10
Lewis	10 (2)
Owen	5
Packer	3 (2)
Sinclair	6 (4)
Scullion	19
Walley	18
Walker	19
Welbourne	19
Williams	19

F.L. Scorers

Eddy	5
Endean	5
Franks	1
Green	3
Lewis	1
Packer	1
Scullion	2
Walley	3
Opponents	1

LONDON MID-WEEK LEAGUE

League Cup in brackets

Appearances

Brownsell	1
Buckingham	1
Cooper	6 (1)
Farley	3 (1)
Franks	5
Garbett	2
Garvey	3
Green	2
Hale	2
Hobbis	1
Jennings	1
Lees	2 (1)
Lewis	4 (1)
McGettigan	3
McGilvray	2 (1)
Musson	1
Owen, B.	4 (1)
Packer	4
Pearce	6 (1)
Robson, I.	1
Sinclair	5 (1)
Slater	5
Spelman	1
Walker, R.	1
Walley	1 (1)
Williams	1 (1)

Scorers

Farley	1 (1)
Franks	1
Garbett	1
Green	1
Hale	1
Lewis	3 (1)
McGettigan	1
Owen	3 (1)
Sinclair	1 (1)
Walley	3

SOUTH-EAST COUNTIES LEAGUE

Appearances

Avis	5
Batten	12
Brownsell	10
Cole	6
Davis	1
Dibben	2
Farley	10
Harris	11
Hobbis	13
Hyde	7
Jennings	8
Lang	1
Leathem	4
McGettigan	12
Owen, K.	6
Scars	1
Shadbolt	5
Smith	2
Thompson	3
Walker	13
Wilby	7
White	4

Scorers

Avis	1
Batten	4
Brownsell	4
Farley	1
Harris	1
Jennings	3
McGettigan	2
Shadbolt	1
Walker	1
White	2

F.L. CUP

Appearances

Eddy	2
Endean	2
Garbett	1
Garvey	1
Green	1 (1)
Hale	1
Lees	2
Lewis	2
Scullion	2
Slater	1
Sinclair	1
Walley	2
Walker	1
Welbourne	2
Williams	2

Scorers

Eddy	1
Endean	1
Scullion	1

RESERVE & JUNIOR FIXTURES, 1969-1970

2nd Team—THE LONDON MID-WEEK LEAGUE (LC) Denotes League Cup Fixture

Aug., 1969			F	A	
Wed. 27	Orient	Home	0—0	767	
Sept.					
Wed. 10	Brighton	Away	2—1	1,159	
Oct.					
Wed. 1	Millwall	Home	3—1	911	
Wed. 15	Southend U. (LC)	Home	7—2	1,085	
Tues. 21	Charlton A. ..	Away	6—2	437	
Wed. 29	Millwall	Away	1—2	679	
Nov.					
Wed. 5	Brighton	Home	1—0	838	
Wed. 12	Aldershot	Away		
Wed. 19	Southend U. ..	Home		
Dec.					
Wed. 3	Charlton A. ..	Home		
Wed. 10	Colchester U. ..	Home		
Wed. 17	Colchester U. ..	Away		
Wed. 31	Orient	Away		
Jan., 1970					
Wed. 7	Orient (LC) ..	Home		
Wed. 14	Charlton A. (LC)	Home		
Wed. 21	Aldershot	Home		
Tues. 27	Charlton A. (LC)	Away		
Feb.					
Wed. 4	Brighton (LC) ..	Home		
Wed. 18	Colchester U. (LC)	Away		
Wed. 25	Southend U. ..	Away		
Mar.					
Wed. 4	Millwall (LC) ..	Away		
Wed. 11	Southend U. (LC)	Away		
Wed. 18	Aldershot (LC) ..	Away		
April					
Wed. 1	Millwall (LC) ..	Home		
Wed. 8	Aldershot (LC) ..	Home		
Wed. 15	Colchester U. (LC)	Home		
Wed. 22	Brighton (LC) ..	Away		
May					
Wed. 13	Orient (LC) ..	Away		

RECORD GATES

Record League Gate
27,968 v. Queens Park Rangers 1969/70.
Record Cup Gate
34,099 v. Manchester United 1968/69.

SOUTH-EAST COUNTIES LEAGUE

Senior Division

Aug., 1969			F	A	
Sat. 9	West Ham	Away	2—4		
Sat. 16	Q.P.R.	Away	1—1		
Sat. 23	Tottenham	Away	0—2		
Sat. 30	Orient	Home	3—3		
Sept.					
Sat. 6	Fulham	Away	1—1		
Sat. 13	Orient (L. C.) ..	Away	4—4		
Sat. 20	Chelsea	Away	5—4		
Sat. 27	Luton	Home	0—1		
Oct.					
Sat. 4	Millwall	Away	0—6		
Sat. 11	Crystal Palace ..	Home	1—1		
Sat. 18	Q.P.R.	Home	2—1		
Sat. 25	Colchester U. ..	Away	3—2		
Nov.					
Sat. 1	Gillingham	Home	2—0		
Sat. 8	Ipswich Town ..	Away	0—5		
Sat. 15	Arsenal	Home		
Sat. 22	Reading	Away		
Sat. 29	Colchester U. ..	Home		
Dec.					
Sat. 6	Charlton A.	Home		
Sat. 13	Luton	Away		
Sat. 20	West Ham	Home		
Sat. 27	Crystal Palace ..	Away		
Jan., 1970					
Sat. 3	Orient	Away		
Sat. 10	Millwall	Home		
Sat. 17	Arsenal	Away		
Sat. 24	Gillingham	Away		
Sat. 31	Tottenham	Home		
Feb.					
Sat. 14	Fulham	Home		
Sat. 21	Ipswich	Home		
Sat. 28	Charlton A.	Away		
Mar.					
Sat. 21	Chelsea	Home		
April					
Sat. 4	Reading	Home		

Thomas McInerney & Sons Ltd.

*Building and
Civil Engineering Contractors*

**McInerney House, The Green, Croxley Green,
Rickmansworth WD3 3HM**

Telephone Rickmansworth 78111 (10 lines)

DOUBLE DIAMOND WORKS WONDERS!

Brewed by IND COOPE



***Score
Every Week***

WITH THE
**WATFORD
OBSERVER**

EVERY FRIDAY

PRICE 6d.

THE HANDYMAN'S SHOP

P. BECKFORD LTD.

307 BALDWINS LANE

CROXLEY GREEN

Telephone Rickmansworth 75697

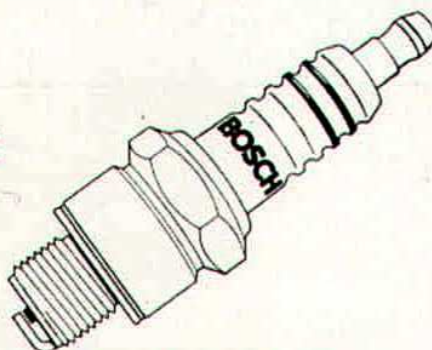
- Timber, Hardboard and Mouldings
- Ironmongery and Tools
- Domestic Hardware
- Garden Requisites
- Key Cutting
- Electrical Accessories
- Glass cut to size

Stockists of high-class Decorating Materials.

Agents for Crown, Sanderson, Continental and Shand Kydd Wallpapers

BOSCH

**New plugs with the hot
CR-Electrode—Instant
get away! Top
performance**



BOSCH LIMITED · WATFORD WD2 4LB · HERTS · WATFORD 44233

Published by the Watford Football Club Ltd., Vicarage Road Ground, Watford.

Printed by C. H. Peacock Ltd., 124 Rickmansworth Road, Watford, Herts.

FOLLOW KEN FURPHY . . .
AND SIGN ON WITH
WATFORD OBSERVER
ALL THE NEWS FOR LESS THAN 1D PER DAY

*Don't be late for the match—
 get a watch from*

JACKSON
 (from B. S. Morse)

"Watford's oldest jewellers
 now in fourth generation"
24 HIGH STREET
WATFORD
 WATFORD 32449

WATFORD

Yellow shirts, black shorts

1. MIKE WALKER
2. DUNCAN WELBOURNE
3. JOHN WILLIAMS
4. KEITH EDDY
5. BRIAN GARVEY
6. WALTER LEES
7. TERRY GARBETT
8. DIXIE HALE
9. BARRY ENDEAN
10. TOM WALLEY
11. STEWART SCULLION
- 12.

SWINDON TOWN

Red shirts, white shorts.

1. PETER DOWNSBOROUGH
2. ROD THOMAS
3. JOHN TROLLOPE
4. JOE BUTLER
5. FRANK BURROWS
6. STAN HARLAND
7. JOHN SMITH
8. ROGER SMART
9. ARTHUR HORSFIELD
10. PETER NOBLE
11. DON ROGERS
12. DON HEATH

Scorers

Referee:

J. K. TAYLOR (Wolverhampton)

Linesmen:

P. D. HUNTER (Bexleyheath)
 Red Flag

Result

Ball Donor:

WALLY BIGGERSTAFF
 of Bedmond

D. G. MARTIN (Bedford)
 Orange Flag

**BEST
 FOR
 ALL
 SPORT**

**WATFORD
 POST**

**YOUR
 LOCAL
 PAPER**
 Every Thursday